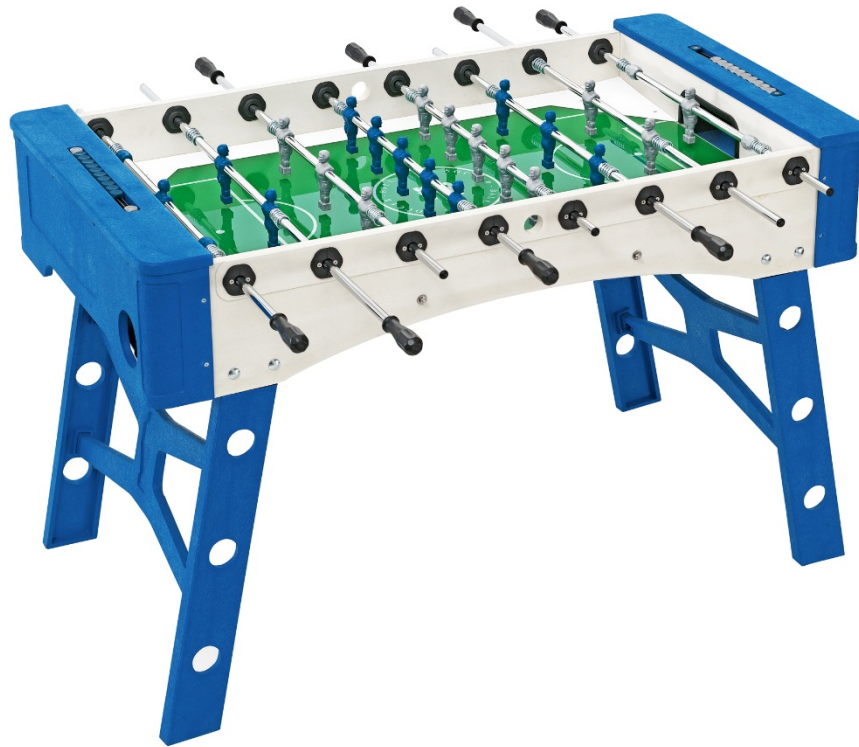


SKY

TABLE FOOTBALL GAME



**MIGHTYMAST
LEISURE**

ASSEMBLY INSTRUCTIONS

Please keep for future reference
Adult Assembly Required

(0316)

ASSEMBLY INSTRUCTIONS




Please keep these instructions for future reference. Adult assembly required.

This table is not a toy & is intended for use by or under the supervision of adults.

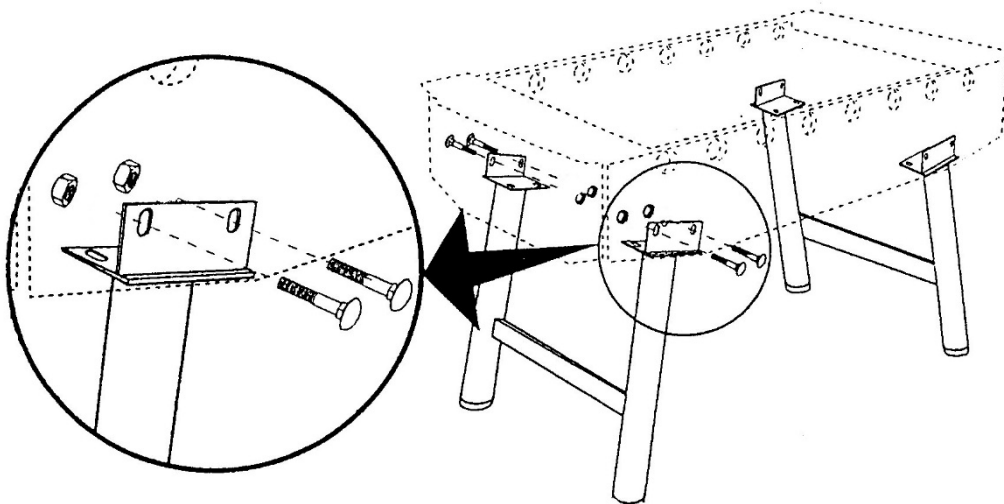
Please do not sit, climb or lean on the table.

A waterproof cover (sold separately) will enhance the life of the table if it is to be used outside all year round.

Parts Identifier

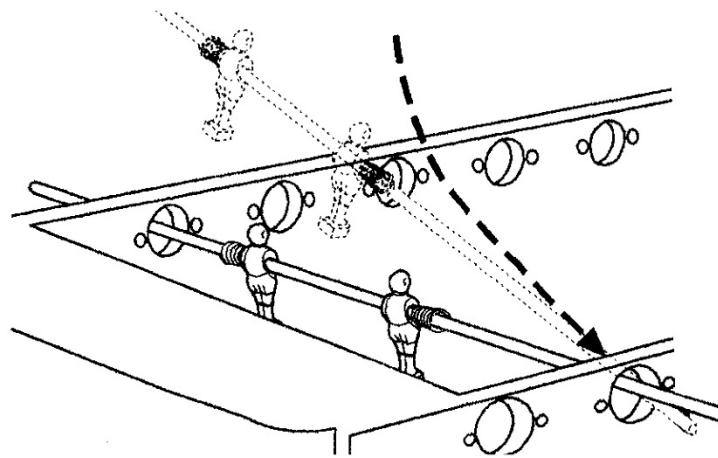
		
Coach bolt	Screw	Nut
8pcs	32pcs	8pcs

1. Find a clean & level place to begin the assembly of your SKY table football game. You will need a Phillips screwdriver, a 13mm spanner & a hammer. Remove all parts from the box & save all packing materials until the parts have been inspected & the table is assembled.
2. Attaching the legs – place the table onto the floor facing the correct way up & then stand it upright on one of the ends. Important – this should be carried out by 2 adults. If easier, turn the table upside down onto the floor.
3. Fix the legs into the slots underneath the table using the bolts & nuts provided. Fit the rubber feet to the bottom of each of the 4 legs.



Insert the coach bolts into the sides of the table followed by a nut. The square neck of the bolt will not fit into the round hole. Tighten the nut so that the neck breaks into the laminate but do not over-tighten – this will not cause the laminate to crack. The mushroom head of the bolt should just touch the laminate surface.

- Stand the table up on its legs & prepare to fit the poles. Push the bars into the table, pushing the handle-end of the pole through the hole first from the inside. Do not fit the handles onto the poles at this stage.

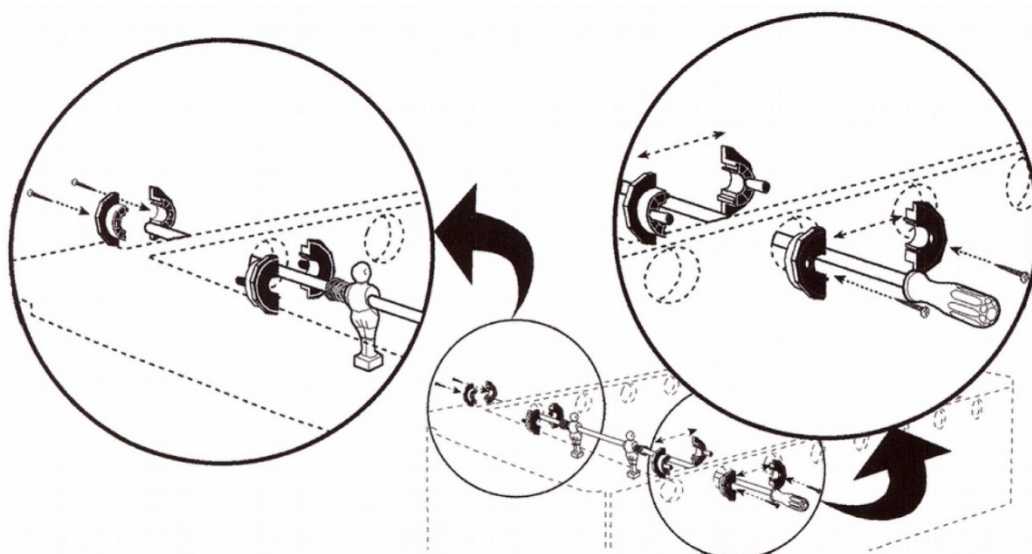


Then starting from the blue score counters end of the table insert the poles as follows:

- Blue 1-man pole
- Blue 2-man pole
- Silver 3-man pole
- Blue 5-man pole
- Silver 5-man pole
- Blue 3-man pole
- Silver 2-man pole
- Silver 1-man pole

There should now be 4 poles on each side of the table with the blue & silver teams facing each other.

- Now fit the pole bearings as shown in the diagram below. At both ends of the poles fit 2 half moon bearings with legs to the inside of the table & then 2 half moon bearings without legs to the outside of the table. Secure with 2 screws. Finally hammer on the handles to the end of the poles.



6. If not already fitted, screw the blue & silver score cubes into the plastic top ends with the 4 long screws provided.

You are now ready to play

Cleaning & Maintenance

Use everyday household glass cleaner for both the glass & the laminate surface. A waterproof cover (sold separately) will enhance the life of the table if it is to be used outside all year round.



Mightymast Leisure is the UK & Ireland agent for FAS Italian table football games

For sales & service contact:

Mightymast Leisure Ltd, 58 Bentwaters Park, Rendlesham, Woodbridge, Suffolk. IP12 2TW. UK

Tel: +44 (0)1394-460896

www.mightymast.com

info@mightymast.com