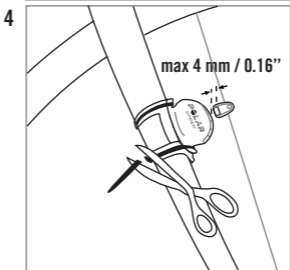
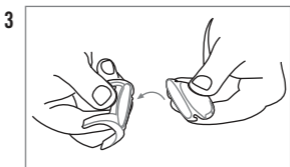
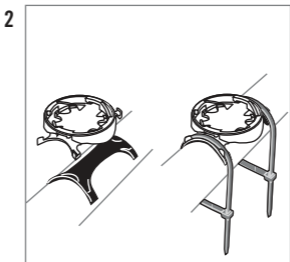
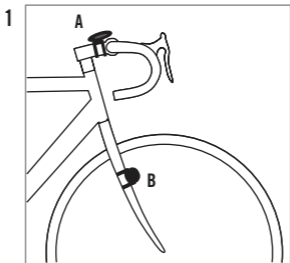


Speed Sensor W.I.N.D.

User Manual



The Polar CS speed Sensor W.I.N.D. is designed to measure speed and distance when cycling. No other use is intended or implied.

The latest version of this user manual can be downloaded at www.polar.fi/support.

Please follow the pictures on the front cover.

Product Elements

1. Polar bike mount / Polar dual lock bike mount (picture 1 A). For instructions on the bike mount installation, refer to the user manual of Polar training computer in question.
2. Speed sensor, rubber part and spoke magnet (picture 1 B).

Installing the Polar Speed Sensor

For a video tutorial, go to http://www.polar.fi/en/support/video_tutorials.

To install the speed sensor and spoke magnet, you will need cutters and a cross-head screwdriver.

1. It is recommended to install the speed sensor on the front fork (as in picture 1) of your bicycle. Do not install the speed sensor on the seat stay if the (optional) power sensor is mounted.
2. Attach the rubber part to the speed sensor (picture 2).
3. Pass the cable ties over the speed sensor and rubber part (picture 3). Adjust the sensor to the front fork so that the POLAR logo faces outwards. Adjust the ties loosely. Do not tighten them fully yet.

ENGLISH

4. Attach the magnet to a spoke at the same level as the speed sensor. There is a small caved dot at the backside of the sensor, which indicates the spot the magnet should be pointing at when passing the sensor. Fasten the magnet to the spoke and tighten it loosely with a screwdriver. Do not tighten it fully yet.

Fine-tune the positioning of both the magnet and the speed sensor so that the magnet passes close to the sensor but does not touch it. Move the sensor towards the wheel/spokes as close as possible. The gap between the sensor and the magnet should be under 4 mm/0.16". The gap is correct when you can fit a cable tie between the magnet and the sensor.

Rotate the front tire to test the speed sensor. The flashing red light on the sensor indicates that the magnet and the sensor are positioned correctly. Once the magnet and the speed sensor are positioned correctly, tighten the screw to the magnet with a screwdriver. Also tighten the cable ties securely and cut off any excess cable tie ends.

Before you start cycling, set the wheel size of your bicycle into the Polar training computer.

Speed Sensor Teaching

Your new speed sensor must be introduced to your Polar training computer in order to receive speed and distance data. This enables training in a group without interference from other sensors.

The Polar training computer and sensor that came with the product set have already been synchronized but teaching is necessary when you start using a new sensor.

For further information on teaching, refer to the user manual of Polar training computer in question.

Care and Maintenance

Keep the speed sensor clean. Clean it with a mild soap and water solution and rinse off with clean water. Dry it carefully with a soft towel. Never use alcohol or any abrasive material such as steel wool or cleaning chemicals. Do not immerse the speed sensor in water.

Your safety is important to us. Make sure that you can turn your handlebars normally and that the cable wires for brakes or gears do not catch the bike mount or the sensor. Also, make sure that the sensor does not disturb pedaling or using the brakes or gears. While riding your bike, keep your eyes on the road to prevent possible accidents and injury. Avoid hard hits as these may damage the sensor.

ENGLISH

Speed Sensor Battery

Contact your authorized Polar Service Center for a replacement of speed sensor. Polar recycles used sensors. Please see the separate Polar Customer Service Card for details.

Frequently Asked Questions

What should I do if...

...the speed reading is 0.0 or there is no speed reading while cycling?

- Make sure the position and distance of the sensor to the magnet are appropriate.
- Check that you have activated the speed function in the Polar training computer. For further information, see Speed Sensor Teaching.
- If the 0.0 reading appears irregularly, this may be due to temporary electromagnetic interference in your current surroundings.
- If the 0.0 reading is constant, you may have exceeded 3000 riding hours and the battery is empty.

...there are irregular speed, distance or heart rate readings?

- Disturbance may occur near microwave ovens and computers. Also WLAN base stations may cause interference when training with Polar speed sensor W.I.N.D. To avoid erratic reading or misbehaviors, move away from possible sources of disturbance.

Technical Specification

Operating temperature:	-10 °C to +50 °C / +14 °F to +122 °F
Battery life:	Average 3000 riding hours
Accuracy:	±1 %
Material:	Thermoplastic polymer
Water resistance:	Splash proof

Limited Polar International Guarantee

- This guarantee does not affect the consumer's statutory rights under applicable national or state laws in force, or the consumer's rights against the dealer arising from their sales/purchase contract.
- This limited Polar international guarantee is issued by Polar Electro Inc. for consumers who have purchased this product in the USA or Canada. This limited Polar international guarantee is issued by Polar Electro Oy for consumers who have purchased this product in other countries.
- Polar Electro Oy/Polar Electro Inc. guarantees the original consumer/purchaser of this device that the product will be free from defects in material or workmanship for two (2) years from the date of purchase.
- **The receipt of the original purchase is your proof of purchase!**
- The guarantee does not cover the battery, normal wear and tear, damage due to misuse, abuse, accidents or non-compliance with the precautions; improper maintenance, commercial use, cracked, broken or scratched cases/displays, elastic strap and Polar apparel.
- The guarantee does not cover any damage/s, losses, costs or expenses, direct, indirect or incidental, consequential or special, arising out of, or related to the product.
- Items purchased second hand are not covered by the two (2) year warranty, unless otherwise stipulated by local law.
- During the guarantee period, the product will be either repaired or replaced at any of the authorized Polar Service Centers regardless of the country of purchase.

Guarantee with respect to any product will be limited to countries where the product has been initially marketed.



This product is compliant with Directive 93/42/EEC. The relevant Declaration of Conformity is available at www.support.polar.fi/declaration_of_conformity.



This crossed out wheeled bin marking shows that Polar products are electronic devices and are in the scope of Directive 2002/96/EC of the European Parliament and of the Council on waste electrical and electronic equipment (WEEE) and batteries and accumulators used in products are in the scope of Directive 2006/66/EC of the European Parliament and of the Council of 6 September 2006 on batteries and accumulators and waste batteries and accumulators. These products and batteries/accumulators inside Polar products should thus be disposed of separately in EU countries. Polar encourages you to minimize possible effects of waste on the environment and human health also outside the European Union by following local waste disposal regulations and, where possible, utilize separate collection of electronic devices for products, and battery and accumulator collection for batteries and accumulators.

Copyright © 2010 Polar Electro Oy, FIN-90440
KEMPELE, Finland.

Polar Electro Oy is a ISO 9001:2000 certified
company.

All rights reserved. No part of this manual may be used or reproduced in any form or by any means without prior written permission of Polar Electro Oy. The names and logos marked with a TM symbol in this user manual or in the package of this product are trademarks of Polar Electro Oy. The names and logos marked with a ® symbol in this user manual or in the package of this product are registered trademarks of Polar Electro Oy.

Disclaimer

The material in this manual is for informational purposes only. The products it describes are subject to change without prior notice, due to the manufacturer's continuous development program.

Polar Electro Inc./Polar Electro Oy makes no representations or warranties with respect to this manual or with respect to the products described herein.

Polar Electro Inc./Polar Electro Oy shall not be liable for any damages, losses, costs or expenses, direct, indirect or incidental, consequential or special, arising out of, or related to the use of this material or the products described herein.

Manufactured by

Polar Electro Oy

Professorintie 5

FIN-90440 KEMPELE

Tel +358 8 5202 100

Fax +358 8 5202 300

www.polar.fi

POLAR®

LISTEN TO YOUR BODY